

Port Madison Yacht Club

West Sound Corinthian Yacht Club

Bremerton Yacht Club

Port Orchard Yacht Club

Poulsbo Yacht Club

West Sound Sailing Association



This year's cover features *the Boss*, skippered by Chad Stenwick. Chad and his crew placed First Overall in the 2021 WSSA Trophy Series, capturing the perpetual *West Sound Sailor of the Year* award.

2022
Trophy Series

Table of Contents

Preface	3
Qualifying Boats in 2021 Series	3
Past West Sound Sailors of the Year and Their Yachts	3
Representatives 2021	5
2022 WSSA Trophy Series Race Schedule	6
Activities Following Races	6
WSSA Race Booklet Changes for 2022	6
Notice of Race	7
Sailing Instructions	11
Individual Race Announcements	14
PMYC Jim Depue Memorial Race	14
POYC Annual Spring Shakedown	16
WSCYC Annual Rich Passage Ramble	18
PYC Poulsbo Invitational	20
POYC WSSA Invitational	23
BYC Annual Blake Island Race	25
WSCYC Brownsville Race	27
Registration forms	29
PMYC Jim Depue Memorial Race	29
POYC Annual Spring Shakedown	30
WSCYC Annual Rich Passage Ramble	31
PYC Poulsbo Invitational	32
POYC WSSA Invitational	33
BYC Annual Blake Island Race	34
WSCYC Brownsville Race	35

West Sound Sailing Association
Trophy Series
Preface

(Note: the preface is not part of the rules.)

The top 2022 WSSA Trophy Series boat will be featured on the cover of the 2023 WSSA Trophy Series sailing instruction booklet.

Qualifying Boats 2021 Series

Boat Name	Skipper	Type	Rating
Swan	Gary Davis	T-Bird	195
The Boss	Chad Stenwick	J-35	72
Great White	Dan Wierman	J-35	72
Corsair	Gary Seibert	Hanse 411	102
Tantalus	Ole Hovland	Express 37-2	75
Aquila	Bill Powell	Beneteau 30	158
Castaway	Kelly Foust	Catalina 30	222
Alcyone	Devon Blankenship	Rosen 30 PH	333
Wood n Wind	Tim Verharon	Custom 30	129
Insatiable	Steven Gordon	T Bird	201
Bravo	Cranston	Santana 30	132

Past West Sound Sailors of the Year, and their Yachts

2021	Chad Stenwick	THE BOSS	J-35
2019	Gary Davis	SWAN	Thunderbird
2018	Cody Pinion	TIGGER	FT-10
2017	Matthew Gardener-Brown	DULCINEA	J-105
2016	Cody Pinion	TIGGER	FT-10
2015	Dan Wierman	GREAT WHITE	J-35
2014	Bryan Massey	FALCON	Cal 9.2
2013	Dan Wierman	GREAT WHITE	J-35
2012	Dan Wierman	GREAT WHITE	J-35
2011	Matthew Gardener-Brown	DULCINEA	J-105
2010	Matthew Gardener-Brown	DULCINEA	J-105
2009	Steve Trunkey	EGRESS	Hotfoot 27
2008	Dan Wierman	GREAT WHITE	J-35
2007	Dan Wierman	GREAT WHITE	J-35
2006	Matthew Gardner-Brown	DULCINEA	J-105
2005	Arnie Jarlock	TENSION	Tartan Ten
2004	Arnie Jarlock	TENSION	Tartan Ten
2003	Arnie Jarlock	TENSION	Tartan Ten
2002	Bob Lubowicki	CARENE	X-Yacht 119
2001	Jim Snow	YANKEE	Ranger 37
2000	Paul Faget	EGRESS	Hotfoot 27
1999	Dan Wierman	GOOD NEWS	Bystedt 30
1998	John Kerrigan	NEW HAVEN	Baltic 38
1997	Paul Faget	EGRESS	Hotfoot 27
1996	Dan Wierman	GOOD NEWS	Bystedt 30

Past West Sound Sailors of the Year, and their Yachts

1995	Jim Snow	YANKEE	Ranger 37
1994	Dan Wierman	GOOD NEWS	Bystedt 30
1993	Jim Snow	YANKEE	Ranger 37
1992	Ted Morneau & Jim Wright	FLITE'	Olson 40
1991	Paul Faget	EGRESS	Hotfoot 27
1990	Ted Morneau & Jim Wright	FLITE'	Olson 40
1989	Jim Snow	ENDEAVOR	Catalina 27
1988	Dan Wierman	GOOD NEWS	Bystedt 30
1987	Bob Verger & Rich Koch	ELAN	Catalina 38
1986	Milt Michaelis	SHADOWS	Erickson 34T
1985	Gary Davis	SWAN	Thunderbird
1984	Jerry Lowrie	FAST BREAK	Ranger 28
1983	Jerry Lowrie	FAST BREAK	Ranger 28
1982	Paul Estep	ELAN	Catalina 38
1981	Jerry Lowrie	FAST BREAK	Ranger 28
1980	Jim Snow	ENDEAVOR	Catalina 27
1979	Dick Ziglar	D2Z	Catalina 27
1978	Steve Nelson	MAAKEN	Custom Miller 28

*West Sound Sailing Association Representatives
2022*

Bremerton Yacht Club	John Sprouse 5222 Rest Place NE, Bremerton, WA 98311	jsprouse01@gmail.com
Port Madison Yacht Club	Ty Abrams	tye.abrams@gmail.com
Port Orchard Yacht Club	Ole Hovland 11123 Woodchuck Lane SE Port Orchard, WA 98367	ole-2@msn.com
West Sound Corinthian Yacht Club	Chad Stenwick c/o WSCYC PO Box 1111 Port Orchard, WA 98366	Stenwick@gmail.com
Poulsbo Yacht Club	Mike Milburn	milburn69802@msn.com
WSSA Chairman	Ole Hovland 11123 Woodchuck Lane SE Port Orchard, WA 98367	ole-2@msn.com

**2022 WSSA TROPHY SERIES
RACE SCHEDULE**

<u>SPONSORING YC</u>	<u>RACE</u>	<u>DATE</u>
Port Madison	Jim Depue Memorial Race	February 26
Port Orchard	Annual Spring Shakedown	March 26
West Sound Corinthian	Rich Passage Ramble	April 16
Poulsbo	Poulsbo Invitational	April 30
Port Orchard	Port Orchard Invitational	May 14
Bremerton	Blake Island	June 4
West Sound Corinthian	Brownsville Race	June 25**

Activities Following Races

**June 25, WSCYC Brownsville Race

The WSSA Trophy Series awards announcement will be held at a Brownsville Marina Upper Park Gazebo location. Anyone participating in any race of the WSSA Trophy Series is invited. This event is dependent on COVID-19 restrictions at that time.

All series participants are invited to tie up at the Brownsville Marina breakwater after the final race. The Awards announcement begins about one hour after the last race results are provided to the WSSA chairman. Additional information will be posted at the WSSA website, www.wscyc.net.

***Skippers, crew and race committees are encouraged
to attend.***

West Sound Sailing Association
Trophy Series

NOTICE OF RACE

The conduct of race participants is subject to the current local, state and federal COVID 19 mandates. Each skipper is responsible for his or her own vessel and their crew compliance with COVID 19 mandates. Skippers should familiarize themselves with the COVID 19 mandates in effect at the time of each scheduled race.

1. RULES

- 1.1 The series will be governed by the rules as defined in **The Racing Rules of Sailing 2021-2024** (RRS) including US SAILING prescriptions, as they apply.
- 1.2 All yachts shall comply with Pacific International Yachting Association (PIYA) Safety Equipment Requirements for Category Nearshore.
- 1.3 The Racing Rules of Sailing Rules 1.2, 35, 42.1, 52, 63.4, 78.2, A5.3 and A8 will be changed as indicated. The changes will appear in full in the Sailing Instructions and Notice of Race, as applicable.
- 1.4 Pacific Handicap Racing Fleet - Northwest (PHRF-NW) handicapping rules shall apply to Divisions I and II. For handicap information, see web site www.phrf-nw.org. (This rule does not apply to Division III)
- 1.5 Interference with Traffic: Interference with non-racing traffic is strictly forbidden. A report of interference by the traffic to the Race Committee is sufficient cause for protest. No sounds are required.
- 1.6 Code of Federal Regulations: Title 33 (Navigation and Navigable Waters), Part 334 (Danger Zone and Restricted Area Regulations) to the extent that they apply to the area sailed. Of particular interest is 334.1230, 334.1240 and 334.1244. These are available at <http://ecfr.gpoaccess.gov/cgi/t/text/>.
- 1.7 Yachts shall not approach within 100 yards of any US naval vessel. If you need to pass within 100 yards of a U.S. naval vessel in order to ensure a safe passage, you must contact the U.S. naval vessel or the Coast Guard escort vessel on VHF-FM channel 16. See NOR 7.1.
- 1.8 Individual race announcements.
- 1.9 The following Standard Rules and Racing Instructions shall apply to all races except as may be amended by individual race announcements.

2. ELIGIBILITY AND ENTRY

- 2.1 The Series is open to members of US SAILING, PHRF-NW and all members of yacht clubs with Pacific International Yachting Association (PIYA) affiliation.
- 2.2 A valid PHRF-NW rating is required for Divisions I and II. Division III requires a valid PHRF-NW rating or a rating assigned by the Race Committee.
- 2.3 Eligible boats may enter each race by completing the appropriate form and following the registration procedure given on each race announcement. Registration forms must be complete and accurate. **Participants failing to comply with these requirements will be subject to disqualification without a hearing** at the discretion of the Race Committee. Late registrations may be accepted at the discretion of the Race Committee.

3. ENTRY FEES:

\$20.00	Standard Fee
\$15.00	PHRF-NW Member

These fees must accompany your registration form. Checks are to be made payable to the Yacht Club listed on the registration form.

4. SCHEDULE

4.1 Dates of Racing:

<u>SPONSORING YC</u>	<u>RACE</u>	<u>DATE</u>
Port Madison	Jim Depue Memorial Race	February 26
Port Orchard	Annual Spring Shakedown	March 26
West Sound Corinthian	Rich Passage Ramble	April 16
Poulsbo	Poulsbo Invitational	April 30
Port Orchard	Port Orchard Invitational	May 14
Bremerton	Blake Island	June 4
West Sound Corinthian	Brownsville Race	June 25

- 4.2 The scheduled time of the warning signal for the first start for each race is given in the individual race announcements.

5 COURSES AND DESCRIPTIONS OF MARKS:

See the individual race announcements in this booklet.

6 SCORING

- 6.1 The Low Point System of Appendix A of the RRS applies. The Series has seven (7) scheduled races, of which five (5) must be completed to constitute a series.
- 6.2 For each race of the series, a boat that did not finish (DNF) or retired after finishing (RAF) shall be scored points for the finishing place one more than the number of boats that finished. A boat that was disqualified (DSQ) shall be scored points for the finishing

place one more than the number of starters for that race. A boat that did not start (DNS) shall be scored points for the finishing place one more than the number of starters for that race. Rule A5.3 applies as modified here.

- 6.3 Division III entries are not counted in the overall series for West sound Sailor of the Year.
- 6.4 A boat that is scored in the series may act as Race Committee boat and be scored her average score for her other races in the series excluding her worst score. It is her responsibility to ensure her score is appropriately averaged and to notify the WSSA Chairman of any discrepancy.
- 6.5 RRS Rule 78.2 is changed to read: “When a rule requires a valid certificate to be produced or its existence verified before a boat races, and this cannot be done, the boat may race provided that the race committee receives a statement signed by the person in charge that the boat has a valid certificate (a signed entry form meets this requirement). If the certificate is not produced or verified before the end of the series, the boat shall be disqualified from all races of the event and excluded from the series scoring without a hearing. Boats whose finishing place is after the excluded boat will be scored one place higher in that race’s series scoring.
- 6.6 A boat must compete in three (3) or more races to be qualified for and be included in the series.

7 MANUAL POWER

- 7.1 A boat's standing rigging, running rigging, spars and movable hull appendages shall be adjusted and operated only by the power provided by the crew. However, a boat with a crew of one (1) (single hand) may use an automatic steering device. The crew of one (1) (Single hand) must wear a personal flotation device at all times during racing. This changes RRS Rules 1.2 and 52.

8 RADIO COMMUNICATIONS

- 8.1 A boat shall neither make radio transmissions while racing nor receive radio communications not available to all boats. This restriction also applies to mobile telephones. However, a boat may contact commercial or private traffic to determine their intent or to confirm that the boat will not impede the commercial or private vessel under current or foreseeable circumstances.
- 8.2 Channel 72 may be used for Race Committee announcements before and during racing. It is recommended that all boats monitor channels 14, 16 and 72. Channel 72 may, when not racing, also be used for pre-race check in, notification of competitor retirement, etc.

- 9 **PROTEST COMMITTEE:** The Protest Committee may include competitors in the race. Competitors who are considered interested parties only because they sailed in the regatta (provided their position in the overall standings – or in their class – cannot be affected significantly by the decision of the Protest Committee) may serve on the Protest Committee. This changes RRS 63.4. Competitors in the race who are members of the Protest Committee will not, wherever practical, be participants in the same class as any of the parties to the protest.

10 PRIZES

- 10.1 Prizes will be awarded for each race as identified in the race announcement for that race by the sponsoring yacht club.
- 10.2 **PRIZES & AWARDS:** WSSA prizes will be awarded to first, second and third place based on the number of qualifiers in each Division. The number of prizes is determined by one half of the number of qualifiers, rounded down. The perpetual *West Sound Sailor of the Year Trophy* is awarded to the lowest overall scored finisher from Divisions I and II (see NOR Rule 6.2). Division III entries are eligible for Division III awards only. Series ties will be decided in favor of the yacht with the most first place finishes (changes Rule 8). If still tied, then in favor of the yacht with the most second place finishes, etc. If still tied, then in favor of the yacht with the best finish in the last race. Except for Division III, boats must be registered with PHRF-NW to be eligible for WSSA series prizes.
- 10.3 **RACE RESULTS:** Individual series race results and standings will be posted on WSSA web site (www.wscyc.net and follow links) as soon as they are made available.

SAILING INSTRUCTIONS:

- 1 **RULES, DOCUMENTS, SCHEDULE OF RACES, COURSES**
See Rules (1), Schedule (4.1), and Courses and Description of marks (5) in the Notice of Race. See also Changes to the Sailing Instructions (4) of these instructions
- 2 **REGISTRATION**
Registration procedures are given in the individual race announcements in this booklet and Notice of Race 2.2
- 3 **NOTICES TO COMPETITORS**
The race committee, during check in or registration, will provide any additional notices to competitors should additional notices be required, the race shall be postponed until all competitors receive said notice.
- 4 **CHANGES TO SAILING INSTRUCTIONS**
The race committee, during check in or registration, will provide changes to the Sailing Instructions in writing. Should additional changes be required, the race shall be postponed until all competitors receive said changes.
- 5 **DIVISIONS:** Divisions shall be based on PHRF-NW ratings or “cruising” as follows:

DIVISION I	115 and under	Pennant 1 (<i>white w/red oval</i>)
DIVISION II	116 and over	Pennant 2 (<i>blue w/white oval</i>)
DIVISION III	Cruising	Pennant 3 (<i>red, white, blue</i>)
- 5.1 The order of start shall be Division III, Division II and Division I unless modified by a General Recall. See GENERAL RECALL. **Should the Race Committee choose to have only one start, the Division I (Pennant 1) and the First Substitute (General Recall) flags will fly before the scheduled time of the first warning. The warning signal for the single start shall be delayed until the scheduled time for the last warning and shall be indicated by the dropping of the First Substitute flag.** The start shall be signaled by the dropping of Pennant 1. This changes RRS Rule 26."
- 5.2 Boats shall register with the same rating throughout the series unless a change in assigned PHRF rating causes a change in handicap. Boats will remain in the same Division throughout the series regardless of handicap rating changes.
- 6 **SCORING**
- 6.1 See Notice of Race paragraph 6.1 through 6.6. The series has seven (7) scheduled races, five (5) must be completed to constitute a series.
- 7 **SIGNALS:** Races shall be started by using the following signals. Times shall be taken from the visual signals; the absence of a sound signal shall be disregarded.

7.1 **STARTING SEQUENCE:** (per RRS, rule 26, and repeated here for information only)

<i>Minutes before starting signal</i>	<i>Signal</i>	<i>Signal Flag</i>	<i>Sound</i>
5 minutes	Warning	Division flag raised	1 sound
4 minutes	Preparatory	'P' flag raised	1 sound
1 minute	One-minute	'P' flag removed	1 long sound
0 minute	Start	Division flag removed and next Division flag raised	1 sound

NOTE: The warning signal for each succeeding Division shall be made with the starting signal of the preceding Division. For the order of start, see Divisions above.

7.2 **POSTPONEMENT:** A postponement may be signaled in accordance with RRS Rule 27.3.

7.3 **INDIVIDUAL RECALLS:** Individual recalls shall be signaled in accordance with RRS Rule 29.1. The hailing of sail numbers or the yacht name for yacht(s) over the line early by the race committee is optional. However, responsibility for a correct start remains with the skipper.

7.4 **GENERAL RECALL:** A general recall for the starting division shall be signaled in accordance with RRS Rule 29.2. Warning signal for the recalled class shall be concurrent with the start signal of the last scheduled class. This changes RRS Rule 29.2.

7.5 **PENALTY SYSEM**

The 'Two Turn Penalty' is replaced with a 'One Turn Penalty' thus modifying Rules 44.1 and 44.2. Rule 44.3 shall not apply.

7.6 **PROTESTS AND REQUESTS FOR REDRESS:** Protests and requests for redress will be made per Part 5 of the **Racing Rules of Sailing**. The race committee shall be notified of a boat's intent to protest or to file for redress at the first opportunity. Hearings shall be scheduled as required and with notification of parties. The race committee shall accept all protests and requests or refer a yacht to the appropriate place for filing.

7.7 **SHORTENED COURSE:** The course may be shortened at any mark of the course. Code flag "S" shall signal a shortened course. Note: Division III can be shortened independently of Divisions I and II as they are not scored together with I and II in the overall west sound sailor of the year award.

8 **USE OF ENGINE:** Engines shall not be used except as necessary to avoid non-racing traffic, a dangerous situation or to aid in the rescue of a boat or crew. The yachts skipper shall report (in writing) all details to the protest committee (see SI 7.5), which may then give redress. Note: starting the engine in advance of a possible danger but not placing it in gear, does not relieve the yacht from the reporting requirements. This supersedes RRS Rule 42.1.

9 **RADIO COMMUNICATIONS:** In fairness to all competitors, the Race Committee will not answer hails or radio calls from contestants other than for emergencies or withdrawals. However, contestants may communicate with the Race Committee if called

by them, but this communication should be limited to position on the course or conditions.

- 10 **TIME LIMIT:** All yachts must finish within the time limit specified in each race announcement. Yachts not finishing within the allotted time will be recorded as "DNF". This changes RRS Rule 35.

**PORT MADISON YACHT CLUB
JIM DEPUE MEMORIAL RACE**

**WSSA TROPHY SERIES RACE #1
SATURDAY, FEBRUARY 26, 2022**

WSSA STANDARD INSTRUCTIONS: All WSSA standard instructions, found in the front of this book shall apply, except as may be amended herein.

REGISTRATION: Online Entry Form and Payment is available at portmadisonyc.org and racers are encouraged to use this entry avenue, otherwise Pre-registration by mail is encouraged (including PMYC yachts) - received by February 18 or delivered to the race committee not less than 30 minutes prior to the first warning signal. Late registrations may be accepted at the discretion of the Race Committee.

MOORAGE: Limited moorage facilities are available at PMYC Friday and Saturday.

COURSE: For *North* wind start: all marks to Starboard. **S - Z - W - E - S**

For *South* wind start: all marks to Port. **S - E - W - Z - S**

SIGNALS: A *North* wind start will be indicated by a placard "N".

A *South* wind start will be indicated by a placard "S".

DISTANCE: 16.5 nautical miles, may be shortened at any mark.

DESCRIPTION OF MARKS:

- S Start / Finish line off Point Monroe.
- E Red Nun Buoy off Wing Point.
- W West Point buoy.
- Z PMYC Pillar style marker at approx Lat 74.7401 Long -122.4993

TIME LIMIT: Six and one half (6½) hours from the start, provided that the first boat finishes within five (5) hours from its start. If no boat finishes within 5 hours, the race will be abandoned. Those boats completing the course after 6½ hours will be scored "DNF". This changes RRS Rule 35.

SCORING: Time-on-distance.

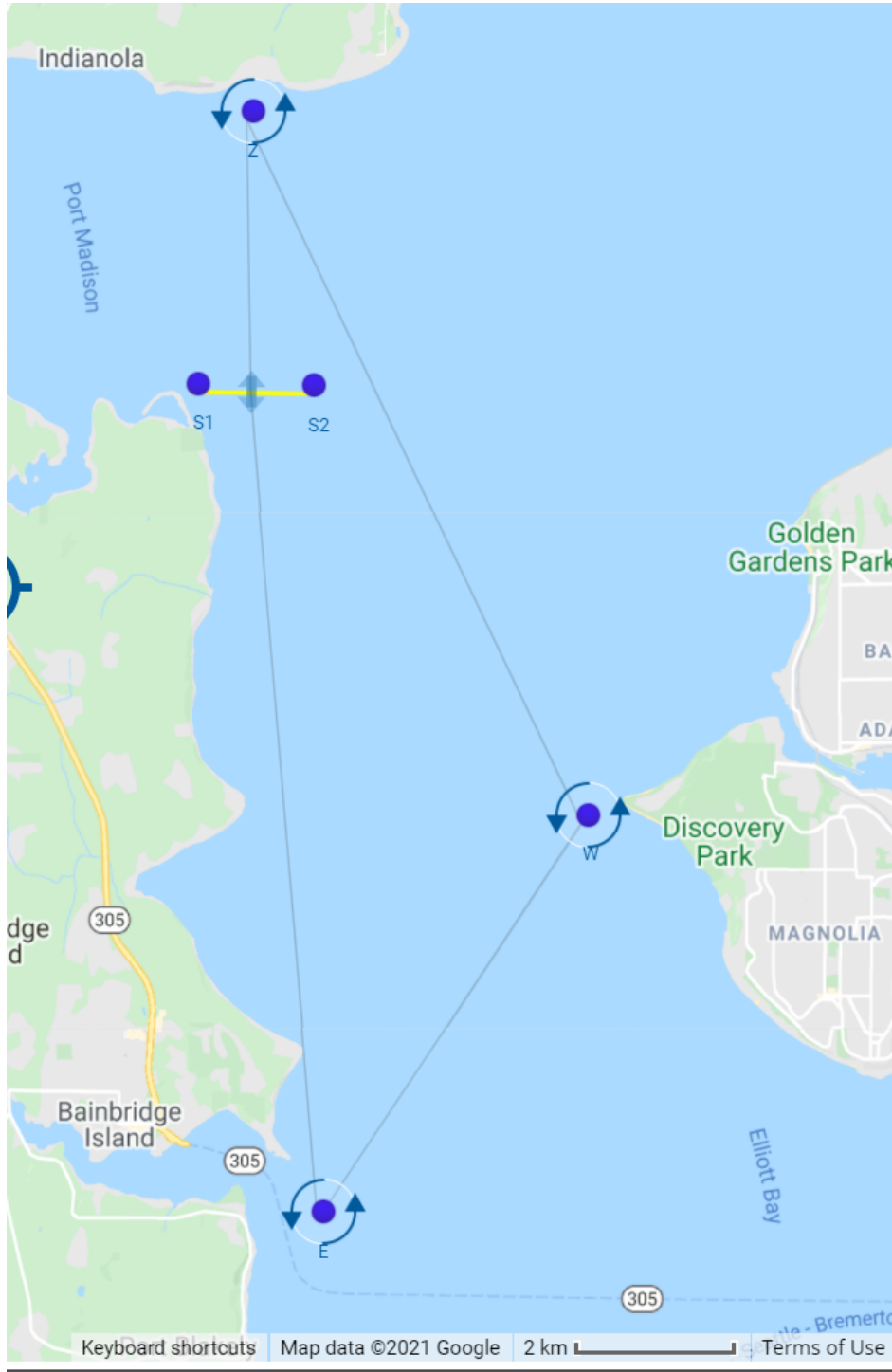
STARTING: **First warning 10:00.** Races shall be started by using the signals in Sailing Instruction 7.

TROPHIES: PMYC trophies will be awarded for 1st overall and within each division as follows: 1st place (3 or more entries), 2nd place (4 or more entries), and 3rd place (5 or more entries).

MOORAGE: PMYC encourages an after the race social gathering at the PMYC club house with moorage available at the PMYC dock.

JIM DEPUE MEMORIAL RACE

WSSA TROPHY SERIES RACE #1



**PORT ORCHARD YACHT CLUB
45th ANNUAL SPRING SHAKEDOWN**

**WSSA TROPHY SERIES RACE #2
SATURDAY, MARCH 26, 2022**

WSSA STANDARD INSTRUCTIONS: All WSSA Standard Instructions, found in the front of this book shall apply, except as may be amended herein.

REGISTRATION: Online registration is available at <https://poyc.org/news-info/regatta/>. Registrations must be delivered to the race committee not less than 30 minutes prior to the first warning signal. Pre-registration by mail received by March 20 is optional. Late registrations may be accepted at the discretion of the Race Committee.

LOCATION: Sinclair Inlet, starting off Port Orchard YC breakwater.

COURSE: *South* wind: 1 - 2 - 3 - 1 - 2 - 4 - 1 (leave marks to starboard).
North wind: 1 - 3 - 2 - 1 - 4 - 2 - 1 (leave marks to port)

SIGNALS: A South wind start will be indicated by a placard "S".
A North wind start will be indicated by a placard "N".

DISTANCE: 11.7 nautical miles (7.6 NM if shortened course is exercised at first finish line crossing).

DESCRIPTION OF MARKS:

- 1 *Start/finish line* - marked by the Race Committee (RC) flag on the breakwater (or the committee boat), and a buoy at the outboard end.
- 2 *Club mark*, orange cylinder, approximately 100 yards N of the radar target "1".
- 3 *Radar target (RA) #5* northeast of the Waterman Dock.
- 4 *Radar target (RA) #3* east of the Annapolis Ferry Dock.

TIME LIMIT: Six (6) hours from the start, provided that the first boat finishes within five (5) hours from its start. If no boat finishes within 5 hours, the race will be abandoned. Those boats completing the course after 6 hours will be scored "DNF". This changes RRS Rule 35.

SCORING: Time-on-distance.

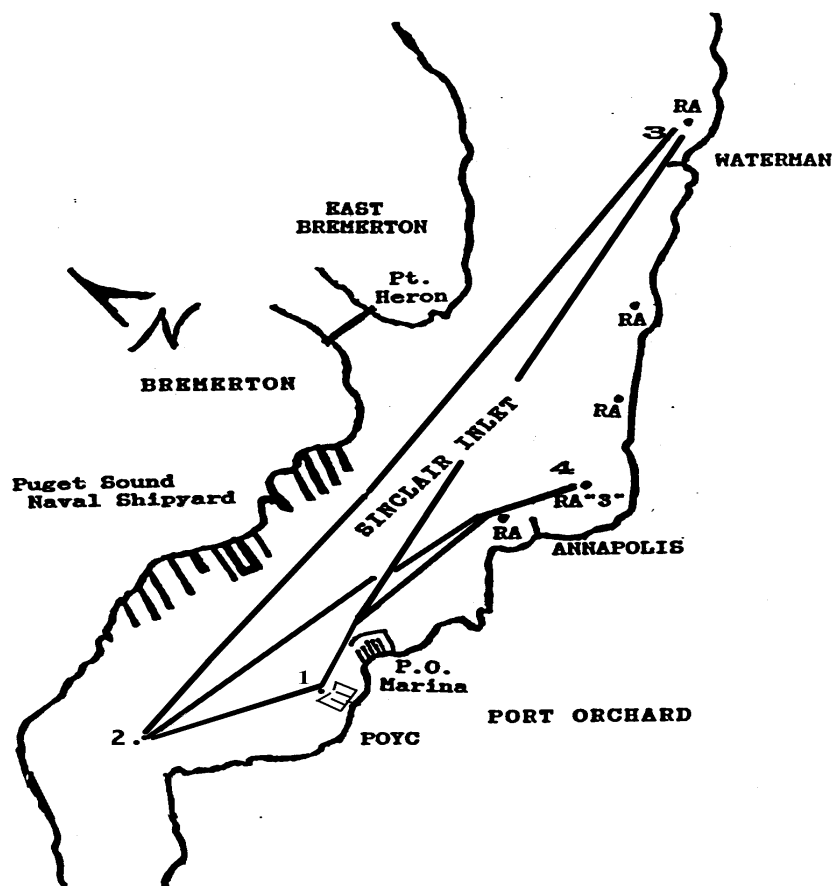
STARTING: **First warning 11:00.** Races shall be started by using the signals in Sailing Instruction 7.

TROPHIES: POYC Division trophies will be awarded as follows 1st place (3 or more entries), 2nd place (4 or more entries), and 3rd place (6 or more entries).

45th ANNUAL SPRING SHAKEDOWN

WSSA TROPHY SERIES RACE #2

THIS CHART FOR REFERENCE ONLY!
DO NOT USE FOR NAVIGATION!



*Due to the increased Security measures in affect at Puget Sound Naval Shipyard,
**all racers are advised to stay 500 yards away from all
Naval ships and the shipyard pier heads.**
Coast Guard and Shipyard Police boats will enforce this zone!!*

**WEST SOUND CORINTHIAN YACHT CLUB
39th ANNUAL RICH PASSAGE RAMBLE**

**WSSA TROPHY SERIES RACE #3
SATURDAY, APRIL 16, 2022**

WSSA STANDARD INSTRUCTIONS: All WSSA standard instructions, found in the front of this book shall apply, except as may be amended herein.

REGISTRATION: Online registration is available at <https://www.wscyc.net/> Pre-registration by mail is encouraged (including WSCYC yachts) received by April 17th or delivered to the race committee not less than 30 minutes prior to the first warning signal. Late registrations may be accepted at the discretion of the Race Committee.

COURSE: (1-2P-3P-1)

Divisions 1 and 2: Start off the Port Orchard Marina breakwater and sail through Rich Passage. Leave Blake Island and Bainbridge Island Reef buoy #4 **to Port**. Finish off the Port Orchard Marina breakwater. Course may only be shortened at Bainbridge Island Reef buoy #4.

Division 3: (1-2P-1) Start off the Port Orchard Marina breakwater and sail through Rich Passage. Leave Bainbridge Island Reef buoy #4 **to Port**. Finish off the Port Orchard Marina breakwater. Course may only be shortened at Bainbridge Island Reef buoy #4.

DISTANCE: Divisions 1 and 2: 20 nautical miles (13.3 nautical miles for shortened course).
Division 3: 13.3 nautical miles (6.6 nautical miles for shortened course).

DESCRIPTION OF MARKS:

1. Start - Finish Line: Marked by an orange buoy off Port Orchard Marina breakwater and an orange flag on the breakwater or committee boat.
2. Blake Island: Blake Island shall represent itself.
3. Bainbridge Island Reef Buoy #4: At Bainbridge Reef, south of Beans Point.

TIME LIMIT: Ten (10) hours from the start, provided that the first boat finishes within eight (8) hours from its start. If no boat finishes within 8 hours, the race will be abandoned. Those boats completing the course after 10 hours will be scored "DNF". This changes RRS Rule 35.

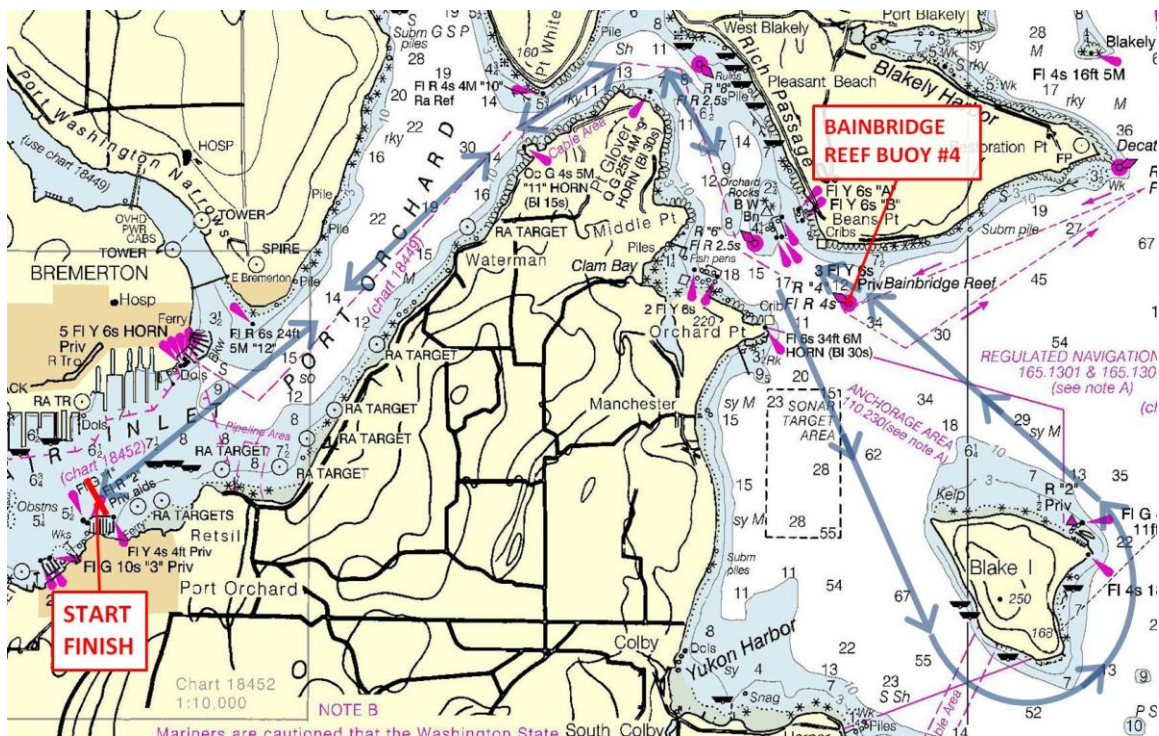
SCORING: Time-on-distance.

STARTING: First warning 10:00. Races shall be started by using the signals in Sailing Instruction 7.

39th ANNUAL RICH PASSAGE RAMBLE

WSSA TROPHY SERIES RACE #3

**THIS CHART IS FOR REFERENCE ONLY!
DO NOT USE FOR NAVIGATION!**



*Due to the increased Security measures in affect at Puget Sound Naval Shipyard,
**all racers are advised to stay 500 yards away from all
Naval ships and the shipyard pier heads.**
Coast Guard and Shipyard Police boats will enforce this zone!!*

POULSBO YACHT CLUB POULSBO INVITATIONAL

WSSA TROPHY SERIES RACE #4 SATURDAY, APRIL 30, 2022

WSSA STANDARD INSTRUCTIONS: All WSSA Standard Instructions, found in the front of this book shall apply, except as may be amended herein.

REGISTRATION: Pre-registration by mail is encouraged received by April 24th or delivered to the race committee not less than 30 minutes prior to the first warning signal. Late registrations may be accepted at the discretion of the Race Committee.

LOCATION: Port Orchard Reach and Liberty Bay, starting approximately one-half NM North of Battle Point and finishing off Poulsbo YC Marina.

COURSE: Either Course A or B may be used. A course board with the proper letter displayed at or before the warning will identify the course.

Course A: (1-2P-3P-4S-5) (1) START, (2) University Point race buoy to port, (3) #6 "dolphin" NE of Point Bolin to port, (4) Liberty Bay PYC race buoy to starboard, (5) FINISH. Course may be shortened at the Point Bolin dolphin.

Course B: (1-3P-2P-4S-5) (1) START, (3) #6 "dolphin" NE of Point Bolin to port, (2) University Point race buoy to port, (4) Liberty Bay PYC race buoy to starboard, (5) FINISH. Course may be shortened at the University Point race buoy.

DISTANCE: Course A: 10.2 NM, Course B: 11.6 NM (5.4 NM if shortened at Point Bolin dolphin, 4.9 NM if shortened at University Point race buoy).

DESCRIPTION OF MARKS:

1. *Start line* - marked by the Race Committee (RC) flag on the committee boat and a PYC buoy at the outboard end.
2. *Large PYC buoy* off University Point
3. #6 "dolphin" NE of Point Bolin.
4. Black 55-gallon drum PYC buoy off Poulsbo Municipal Marina.
5. Finish line – marked by the RC flag on the PYC Marina breakwater and a PYC buoy at the outboard end. **THE FINISH LINE IS RESTRICTED EXCEPT WHEN FINISHING.**

TIME LIMIT: Six (6) hours from the start, provided that the first boat finishes within five (5) hours from its start. If no boat finishes within 5 hours, the race will be abandoned. Those boats completing the course after 6 hours will be scored "DNF". This changes RRS Rule 35.

SCORING: Time-on-distance.

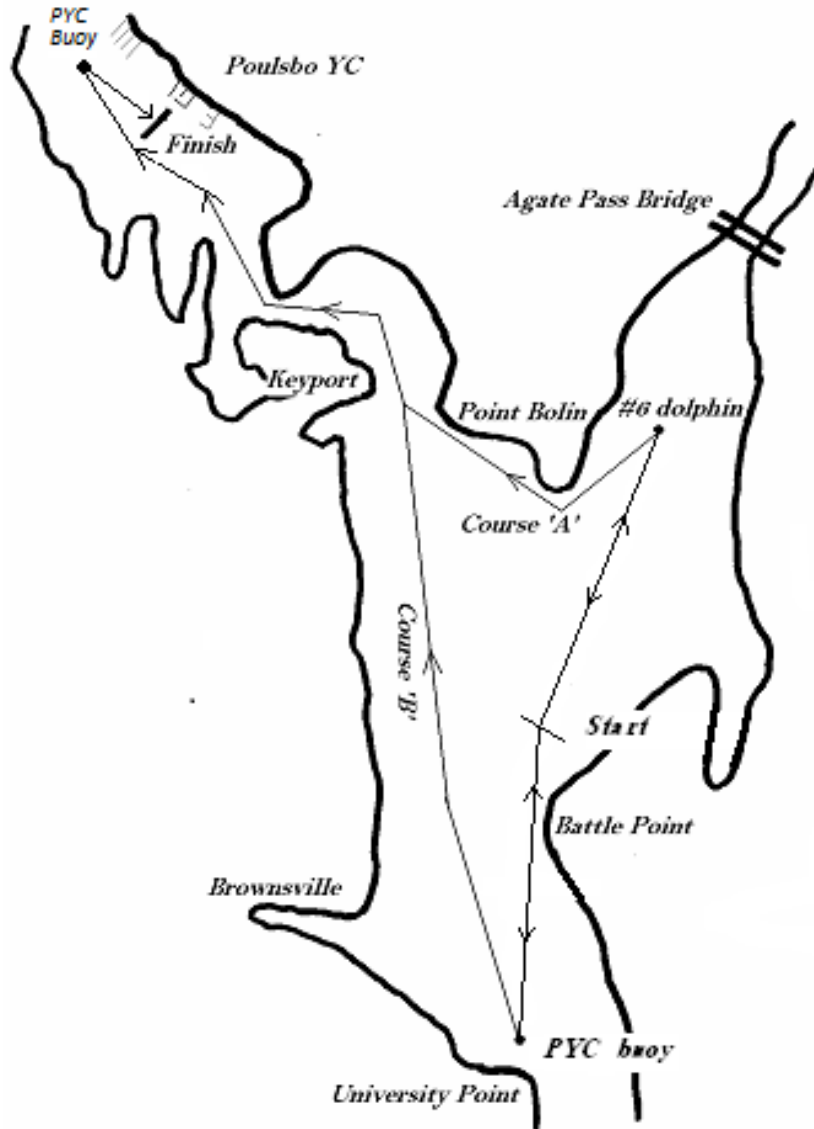
STARTING: First warning 11:00. Races shall be started by using the signals in SI Rule 7.

START SEQUENCE: The start sequence for this race will be Class 1, Class 2 and Class 3.

Note (not part of rules): The Club has some dock space for those wanting to spend the night. Boats may tie up at the reciprocal dock.

POULSBO INVITATIONAL

WSSA TROPHY SERIES RACE #4



*THIS CHART IS FOR REFERENCE ONLY!
DO NOT USE FOR NAVIGATION!*

**PORT ORCHARD YACHT CLUB
WSSA INVITATIONAL**

**WSSA TROPHY SERIES RACE #5
SATURDAY, MAY 14, 2022**

WSSA STANDARD INSTRUCTIONS: All WSSA standard instructions, found in the front of this book shall apply, except as may be amended herein.

REGISTRATION: Online registration is available at <https://poyc.org/news-info/regatta/>. Registrations must be delivered to the race committee not less than 30 minutes prior to the first warning signal. Pre-registration by mail received by May 8th is optional. Late registrations may be accepted at the discretion of the Race Committee.

COURSE: (1-2P-1) START, round the POYC Battle Point race buoy to port, FINISH.
Course may be shortened at Battle Point.

DISTANCE: 16.4 NM (8.2 NM if shortened at Battle Point).

DESCRIPTION OF MARKS:

1. Start/finish line off the POYC breakwater.
2. Orange POYC race buoy off Battle Point.

TIME LIMIT: Eight (8) hours from the start, provided that the first boat finishes within six and one half (6½) hours from its start. If no boat finishes within 6½ hours, the race will be abandoned. Those boats completing the course after 8 hours will be scored "DNF". This changes RRS Rule 35.

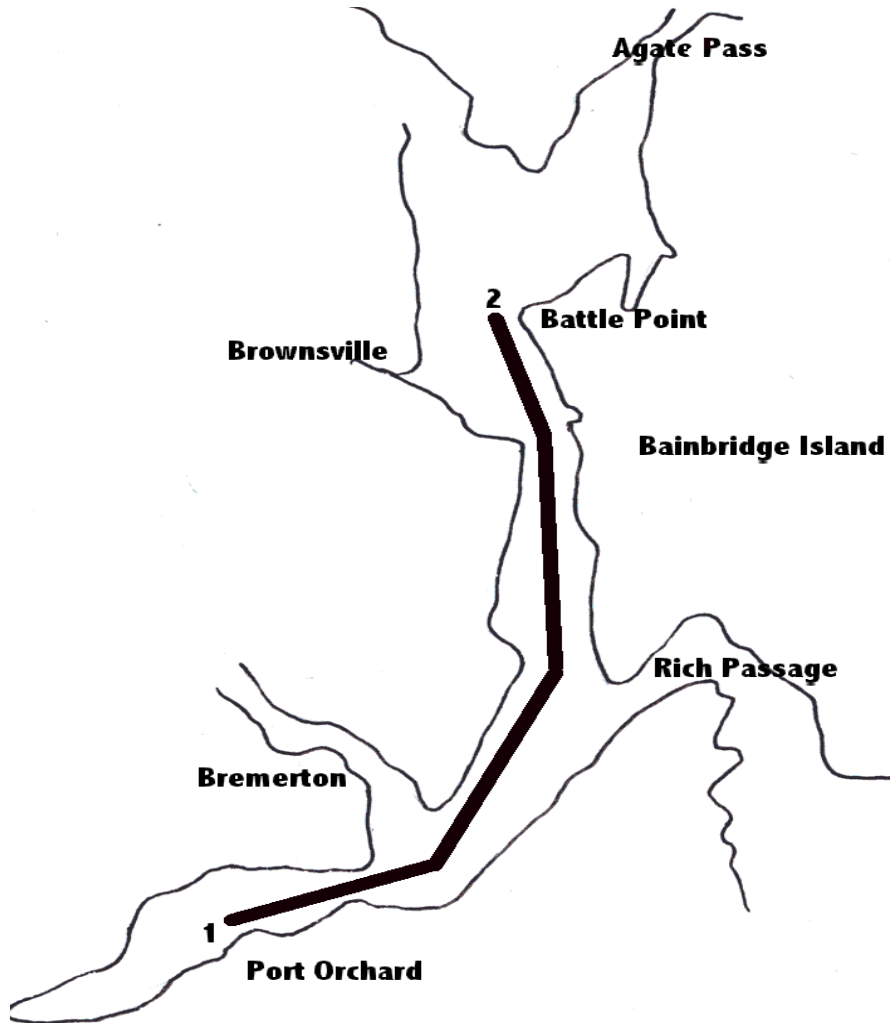
TIME RECORDINGS: The Race Committee may take times at Battle Point. Those times would be used for scoring if no boat has finished within the time limit. Though the course is shortened, no shortened course signal is required. The Race Committee will also record times at the finish.

SCORING: Time-on-distance.

STARTING: First warning 11:00. Races shall be started by using the signals in Sailing Instruction 7.

**WSSA INVITATIONAL
WSSA TROPHY SERIES RACE #5**

**THIS CHART IS FOR REFERENCE ONLY!
DO NOT USE FOR NAVIGATION!**



*Due to the increased Security measures in affect at Puget Sound Naval Shipyard,
**all racers are advised to stay 500 yards away from all
Naval ships and the shipyard pier heads.**
Coast Guard and Shipyard Police boats will enforce this zone!!*

**BREMERTON YACHT CLUB
50th ANNUAL BLAKE ISLAND RACE**

**WSSA TROPHY SERIES RACE #6
SATURDAY, June 4, 2022**

WSSA STANDARD INSTRUCTIONS: All WSSA standard instructions, found in the front of this book, shall apply, except as may be amended herein.

REGISTRATION: Online entry form and payment is available at https://bremertonyc.clubexpress.com/content.aspx?page_id=4002&club_id=725463&item_id=1369841. Pre-registration by mail is encouraged (including BYC yachts) received by June 3rd. Applications delivered to the race committee not less than 30 minutes prior to the first warning signal will be accepted. Late registrations may be accepted at the discretion of the Race Committee.

COURSE: (1-2-3P-4) Start off the “gazebo” at the foot of Trenton Ave, just east of the Washington Narrows. Round Blake Island in *either* direction, leave Bainbridge Island Reef Buoy #4 to **PORT**, finish at start. Course may only be shortened at Bainbridge Island Reef Buoy #4.

DISTANCE: 16.5 nautical miles. Shortened course 11.3 miles.

DESCRIPTION OF MARKS:

1. Start line: off the “gazebo” at the foot of Trenton Ave, just east of the Washington Narrows.
2. Blake Island: Either direction.
3. Bainbridge Island Reef Buoy #4: At Bainbridge Reef, south of Bean Point to **PORT**.
4. Finish line: between RC flag on committee boat and buoy approx. .3 nm NE of Herron Point.

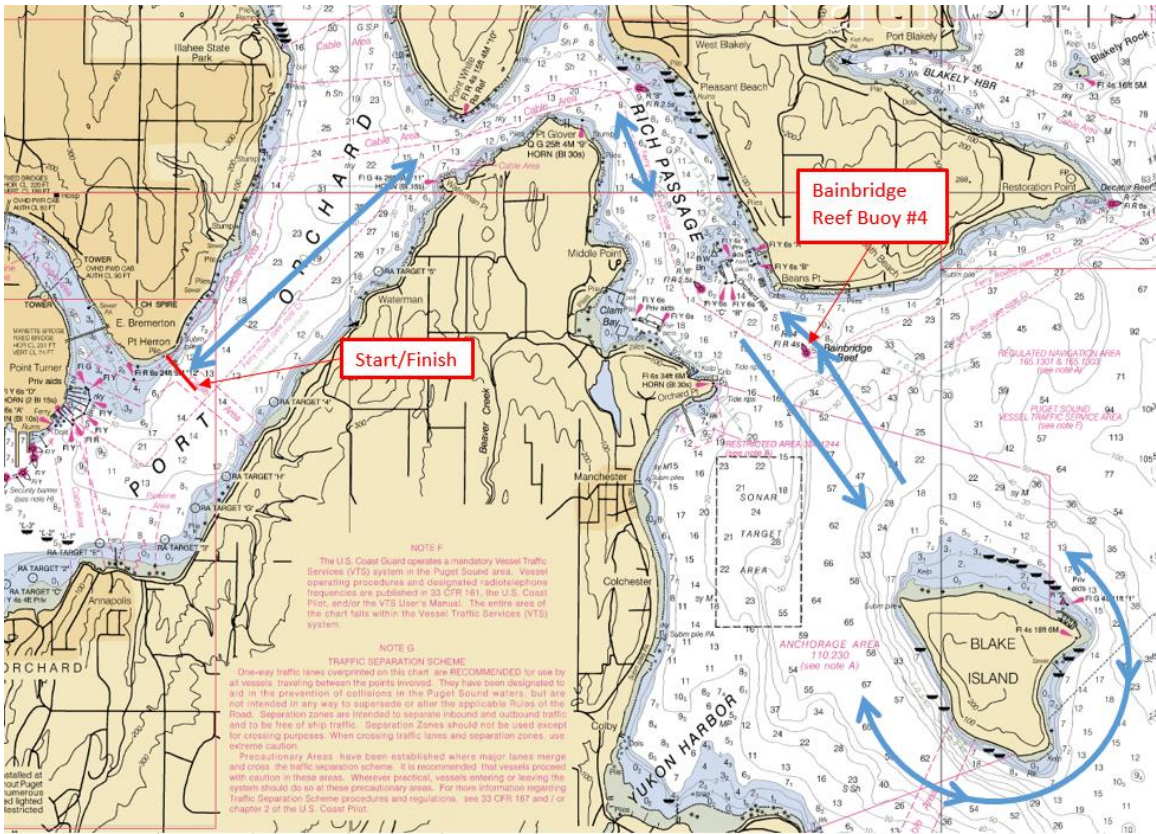
TIME LIMIT: Eight (8) hours from the start, provided that the first boat finishes within six (6) hours from its start. If no boat finishes within 6 hours, the race will be abandoned. Those boats completing the course after 10 hours will be scored "DNF". This changes RRS Rule 35.

SCORING: Time-on-distance.

STARTING: First warning 10:30. Races shall be started by using the signals in Sailing Instruction 7.

BREMERTON YACHT CLUB 50th ANNUAL BLAKE ISLAND RACE WSSA TROPHY SERIES RACE #6

This chart is for reference only, DO NOT use for navigation!!!



All racers are advised to stay 500 yards away from all Naval ships and the Puget Sound Naval Shipyard pier heads.

**WEST SOUND CORINTHIAN YACHT CLUB
BROWNSVILLE RACE**

**WSSA TROPHY SERIES RACE #7
SATURDAY, JUNE 25, 2022**

WSSA STANDARD INSTRUCTION: All WSSA standard instructions found in the front of this book shall apply, except as may be amended herein.

REGISTRATION: Online registration is available at <https://wscyc.net/> Pre-registration by mail is encouraged if received by June 17th or delivered to the race committee not less than 30 minutes prior to the first warning signal. Late registrations may be accepted at the discretion of the Race Committee.

COURSE: *South* wind start all marks to *Port* as follows: **B - P - 6 - B - P - T - B - P - T - B**

North wind start all marks to *Starboard* as follows: **B - 6 - P - B - T - P - B - T - P - B**

SIGNALS: A South wind start will be indicated by a placard "S".
A North wind start will be indicated by a placard "N".

DISTANCE: 15.25 nautical miles. (7.55 NM at first crossing, 11.4 NM at second crossing.)

DESCRIPTION OF MARKS:

- B** - Buoy off Brownsville Marina dock marking end of start/finish line.
- P** - Buoy off University Point.
- 6** - #6 "dolphin" NE of Point Bolin.
- T** - Buoy off Battle Point.

TIME LIMIT: Six (6) hours from the start, provided that the first boat finishes within Four and one half (4½) hours from its start. If no boat finishes within 4½ hours, the race will be abandoned. Those boats completing the course after 6 hours will be scored "DNF". This changes RRS Rule 35.

SCORING: Time-on-distance.

STARTING: First warning 11:00. Races shall be started by using the signals in Sailing Instruction 7.

Information (not part of the rules):

*The WSSA Trophy Series awards announcement will be held
at Brownsville Marina. See page 7 of this booklet.*

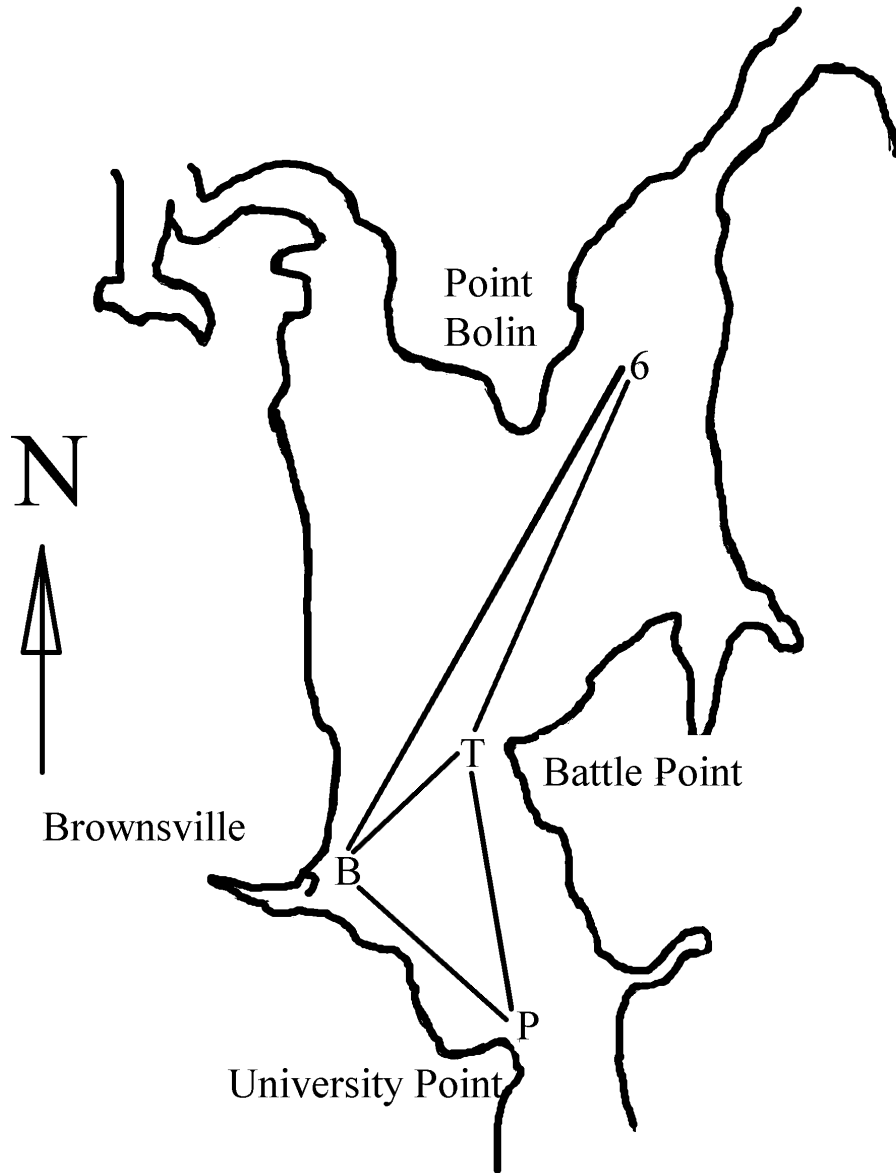
All skippers and crew are invited.

This event is dependent on Covid restrictions.

BROWNSVILLE RACE

WSSA TROPHY SERIES RACE #7

THIS CHART IS FOR REFERENCE ONLY DO NOT USE FOR NAVIGATION!!!



PORT MADISON YACHT CLUB
JIM DEPUE MEMORIAL RACE
SATURDAY, FEBRUARY 26, 2022

REGISTRATION FORM

REGISTRATION DEADLINE: Register online at <https://portmadisonyc.org/> or on water not less than 30 minutes prior to the first warning signal. **Participants failing to comply with these requirements will be subject to disqualification.** Late registrations may be accepted at the discretion of the Race Committee.

(PLEASE PRINT)

SKIPPER _____

ADDRESS _____

CITY _____ ZIP CODE _____ PHONE# _____

BOAT NAME _____ YACHT CLUB _____

SAIL# _____ BOAT MFG (CLASS) _____

HULL COLOR _____ LOA _____ PHRF MEMBER Y / N

RATING _____ DIVISION _____

The undersigned hereby assumes all risk of accident, and expressly agrees that participation is at the discretion of the owners/skippers. West Sound Sailing Association, Port Madison Yacht Club, and their officers, and the race committee, shall not be liable for any loss or injury growing out of participation in this race. I am aware that I must comply with the rules of the road, and that I have no special privileges under those rules with regard to non-racing traffic.

I the undersigned also represent to the race organizers that my yacht has liability insurance currently in effect, covering property damage, personal injury and death and that this policy covers yacht racing activities.

SIGNED _____ DATE _____

E-MAIL ADDRESS _____

ENTRY FEES: \$20.00 STANDARD FEE
 \$15.00 PHRF-NW MEMBER

MAKE CHECKS PAYABLE TO: **PORT MADISON YACHT CLUB**

PORT ORCHARD YACHT CLUB

**SPRING SHAKEDOWN RACE
SATURDAY, MARCH 26, 2022**

REGISTRATION FORM

REGISTRATION DEADLINE: Online registration is available at <https://poyc.org/news-info/regatta/> Registration and fees must be received by the race committee, no later than thirty (30) minutes prior to the first warning on race day. Registration forms must be complete and accurate. **Participants failing to comply with these requirements will be subject to disqualification.** Late registrations may be accepted at the discretion of the Race Committee.

(PLEASE PRINT)

SKIPPER _____

ADDRESS _____

CITY _____ ZIP CODE _____ PHONE# _____

BOAT NAME _____ YACHT CLUB _____

SAIL# _____ BOAT MFG (CLASS) _____

HULL COLOR _____ LOA _____ PHRF MEMBER Y / N

RATING _____ DIVISION _____

The undersigned hereby assumes all risk of accident, and expressly agrees that participation is at the discretion of the owners/skippers. West Sound Sailing Association, Port Orchard Yacht Club, and their officers, and the race committee, shall not be liable for any loss or injury growing out of participation in this race. I am aware that I must comply with the rules of the road, and that I have no special privileges under those rules with regard to non-racing traffic.

I the undersigned also represent to the race organizers that my yacht has liability insurance currently in effect, covering property damage, personal injury and death, and that this policy covers yacht racing activities.

SIGNED _____ DATE _____

E-MAIL ADDRESS _____

ENTRY FEES: \$20.00 STANDARD FEE
 \$15.00 PHRF-NW MEMBER

MAKE CHECKS PAYABLE TO: **PORT ORCHARD YACHT CLUB**

MAIL TO: OLE HOVLAND
 11123 Woodchuck Lane SE
 Port Orchard, WA. 98367

WEST SOUND CORINTHIAN YACHT CLUB

RICH PASSAGE RAMBLE SATURDAY, APRIL 16, 2022

REGISTRATION FORM

REGISTRATION DEADLINE: Online registration is available at <https://www.wscyc.net/> Registration forms and fees must be received by the race committee, no later than thirty (30) minutes prior to the first warning on race day. Online registration is available at wscyc.net. Registration forms must be complete and accurate. **Participants failing to comply with these requirements will be subject to disqualification.** Late registrations may be accepted at the discretion of the Race Committee.

(PLEASE PRINT)

SKIPPER _____

ADDRESS _____

CITY _____ ZIP CODE _____ PHONE# _____

BOAT NAME _____ YACHT CLUB _____

SAIL# _____ BOAT MFG (CLASS) _____

HULL COLOR _____ LOA _____ PHRF MEMBER Y / N

RATING _____ DIVISION _____

The undersigned hereby assumes all risk of accident, and expressly agrees that participation is at the discretion of the owners/skippers. West Sound Sailing Association, West Sound Corinthian Yacht Club, and their officers, and the race committee, shall not be liable for any loss or injury growing out of participation in this race. I am aware that I must comply with the rules of the road, and that I have no special privileges under those rules with regard to non-racing traffic.

I the undersigned also represent to the race organizers that my yacht has liability insurance currently in effect, covering property damage, personal injury and death, and that this policy covers yacht racing activities.

SIGNED _____ DATE _____

E-MAIL ADDRESS _____

ENTRY FEES: \$20.00 STANDARD FEE
 \$15.00 PHRF-NW MEMBER

MAKE CHECKS PAYABLE TO: **WEST SOUND CORINTHIAN YACHT CLUB**

Mail to: RICH PASSAGE RAMBLE RC
 West Sound Corinthian Yacht Club
 PO BOX 1111
 Port Orchard, WA 98366

POULSBO YACHT CLUB
POULSBO INVITATIONAL
SATURDAY, APRIL 30, 2022

REGISTRATION FORM

REGISTRATION DEADLINE: Registration forms and fees must be received by the race committee, no later than thirty (30) minutes prior to the first warning on race day. Registration forms must be complete and accurate. **Participants failing to comply with these requirements will be subject to disqualification.** Late registrations may be accepted at the discretion of the Race Committee.

(PLEASE PRINT)

SKIPPER _____

ADDRESS _____

CITY _____ ZIP CODE _____ PHONE# _____

BOAT NAME _____ YACHT CLUB _____

SAIL# _____ BOAT MFG (CLASS) _____

HULL COLOR _____ LOA _____ PHRF MEMBER Y / N

RATING _____ DIVISION _____

The undersigned hereby assumes all risk of accident, and expressly agrees that participation is at the discretion of the owners/skippers. West Sound Sailing Association, Poulsbo Yacht Club, and their officers, and the race committee, shall not be liable for any loss or injury growing out of participation in this race. I am aware that I must comply with the rules of the road, and that I have no special privileges under those rules with regard to non-racing traffic.

I the undersigned also represent to the race organizers that my yacht has liability insurance currently in effect, covering property damage, personal injury and death, and that this policy covers yacht racing activities.

SIGNED _____ DATE _____

E-MAIL ADDRESS _____

ENTRY FEES: \$20.00 STANDARD FEE
 \$15.00 PHRF-NW MEMBER

MAKE CHECKS PAYABLE TO: **POULSBO YACHT CLUB**

MAIL TO: REGATTA CHAIR SAIL
 Poulsbo Yacht Club
 18129 Fjord Drive N.E., Suite T
 Poulsbo, 98370

PORT ORCHARD YACHT CLUB

**WSSA INVITATIONAL RACE
SATURDAY, MAY 14, 2022**

REGISTRATION FORM

REGISTRATION DEADLINE: Online registration is available at <https://poyc.org/news-info/regatta/> . Registration and fees must be received by the race committee, no later than thirty (30) minutes prior to the first warning on race day. Registration forms must be complete and accurate. **Participants failing to comply with these requirements will be subject to disqualification.** Late registrations may be accepted at the discretion of the Race Committee.

(PLEASE PRINT)

SKIPPER _____

ADDRESS _____

CITY _____ ZIP CODE _____ PHONE# _____

BOAT NAME _____ YACHT CLUB _____

SAIL# _____ BOAT MFG (CLASS) _____

HULL COLOR _____ LOA _____ PHRF MEMBER Y / N

RATING _____ DIVISION _____

The undersigned hereby assumes all risk of accident, and expressly agrees that participation is at the discretion of the owners/skippers. West Sound Sailing Association, Port Orchard Yacht Club, and their officers, and the race committee, shall not be liable for any loss or injury growing out of participation in this race. I am aware that I must comply with the rules of the road, and that I have no special privileges under those rules with regard to non-racing traffic.

I the undersigned also represent to the race organizers that my yacht has liability insurance currently in effect, covering property damage, personal injury and death, and that this policy covers yacht racing activities.

SIGNED _____ DATE _____

E-MAIL ADDRESS _____

ENTRY FEES: \$20.00 STANDARD FEE
 \$15.00 PHRF-NW MEMBER

MAKE CHECKS PAYABLE TO: **PORT ORCHARD YACHT CLUB**

MAIL TO: OLE HOVLAND
 11123 Woodchuck Lane SE
 Port Orchard, WA. 98367

BREMERTON YACHT CLUB

**BLAKE ISLAND RACE
SATURDAY, June 4, 2022**

REGISTRATION FORM

REGISTRATION DEADLINE: Online entry form and payment is available at https://bremertonyc.clubexpress.com/content.aspx?page_id=4002&club_id=725463&item_id=1369841. Participants are encouraged to use this entry process. Otherwise, pre-registration by mail (received by June 3rd) is encouraged. Applications and entry fee will be accepted by the race committee not less than 30 minutes prior to the first warning signal. **Participants failing to comply with these requirements will be subject to disqualification.** Late registrations may be accepted at the discretion of the Race Committee.

(PLEASE PRINT)

SKIPPER _____

ADDRESS _____

CITY _____ ZIP CODE _____ PHONE# _____

BOAT NAME _____ YACHT CLUB _____

SAIL# _____ BOAT MFG (CLASS) _____

HULL COLOR _____ LOA _____ PHRF MEMBER Y / N

RATING _____ DIVISION _____

Number of Skipper and Crew attending post race BYC activity: _____

The undersigned hereby assumes all risk of accident, and expressly agrees that participation is at the discretion of the owners/skippers. West Sound Sailing Association, Bremerton Yacht Club, and their officers, and the race committee, shall not be liable for any loss or injury growing out of participation in this race. I am aware that I must comply with the rules of the road, and that I have no special privileges under those rules with regard to non-racing traffic.

I the undersigned also represent to the race organizers that my yacht has liability insurance currently in effect, covering property damage, personal injury and death, and that this policy covers yacht racing activities.

SIGNED _____ DATE _____

E-MAIL ADDRESS _____

ENTRY FEES: \$20.00 STANDARD FEE
 \$15.00PHRF-NW MEMBER

MAKE CHECKS PAYABLE TO: **BREMERTON YACHT CLUB**

MAIL TO: BREMERTON YACHT CLUB, 2700 Yacht Haven Way, Bremerton, WA 98312

WEST SOUND CORINTHIAN YACHT CLUB

BROWNSVILLE RACE SATURDAY, JUNE 25, 2022

REGISTRATION FORM

REGISTRATION DEADLINE: Online registration is available at <https://wscyc.net/> Registration forms and fees must be received by the race committee, no later than thirty (30) minutes prior to the first warning on race day. Registration forms must be complete and accurate. **Participants failing to comply with these requirements will be subject to disqualification.** Late registrations may be accepted at the discretion of the Race Committee.

(PLEASE PRINT)

SKIPPER _____

ADDRESS _____

CITY _____ ZIP CODE _____ PHONE# _____

BOAT NAME _____ YACHT CLUB _____

SAIL# _____ BOAT MFG (CLASS) _____

HULL COLOR _____ LOA _____ PHRF MEMBER Y / N

RATING _____ DIVISION _____

The undersigned hereby assumes all risk of accident, and expressly agrees that participation is at the discretion of the owners/skippers. West Sound Sailing Association, West Sound Corinthian Yacht Club, and their officers, and the race committee, shall not be liable for any loss or injury growing out of participation in this race. I am aware that I must comply with the rules of the road, and that I have no special privileges under those rules with regard to non-racing traffic.

I the undersigned also represent to the race organizers that my yacht has liability insurance currently in effect, covering property damage, personal injury and death, and that this policy covers yacht racing activities.

SIGNED _____ DATE _____

E-MAIL ADDRESS _____

ENTRY FEES: \$20.00 STANDARD FEE
 \$15.00 PHRF-NW MEMBER

MAKE CHECKS PAYABLE TO: **WEST SOUND CORINTHIAN YACHT CLUB**

Mail to: BROWNSVILLE RACE RC
 West Sound Corinthian Yacht Club
 PO BOX 1111, Port Orchard, WA 98366